

UNDERGROUND ENCLOSURES



22 $\frac{5}{8}$ "

15 $\frac{3}{4}$ "

17 $\frac{1}{8}$ "

10 $\frac{1}{2}$ "

18 $\frac{1}{8}$ "

11 $\frac{7}{16}$ "

1 $\frac{3}{16}$ "





Jensen Precast offers a full lineup of agency approved underground enclosures for infrastructure demands of any size.

We design, manufacture, and deliver handholes made of the highest quality concrete, polymer, and metal. Your project is in good hands with us.

UNDERGROUND ENCLOSURES

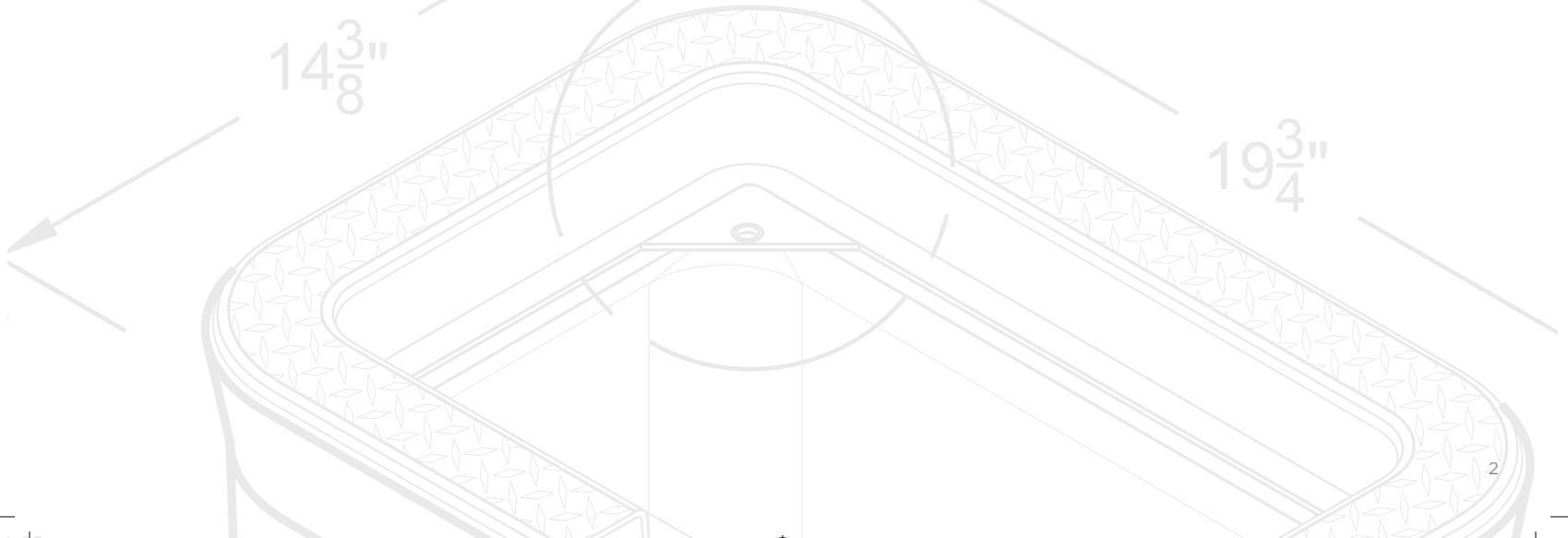
Junction box. Meter box. Pull box. Drain box. Water box. Splice box. Traffic box. Small box. Power box. Cable box. Electrical box. Valve box. Utility box. A handhole may seem like a relatively straightforward product, no matter the nomenclature, but engineers and contractors know it is not so simple.

From manufacturing to installation, every handhole must meet a set of complex specifications, including quality of materials, proper loading capabilities, nonslip surfaces, lock and protection measures, sensible labels, and compliance with industry standards.

How do you know which handhole fits your project? Utility, transportation, and landscape infrastructure experts must address a handful of key questions before committing to the right handhole to meet a specific project need.

- What industries are you currently serving? Telecom? Electric? Highways? Roadways? Irrigation? Go with a manufacturer that can provide consistent solutions for all your jobs to save time and cost.
- How durable is the handhole? How long will it last? Top off your project with underground enclosures that stand the test of time and enable easy access for users for years to come.
- Do you need both traffic and nontraffic rated boxes for your project? Work with a company that knows the exact specifications you need to get the job done compliantly.
- What kind of security are you seeking for your project access points? How safe are the surface areas? Not all handholes are made alike. Ask the manufacturer to detail the locking device and traction overlay of the enclosure lids.
- Will your project benefit from concrete or polymer solutions? What can you expect if you choose one or both materials for a job? Be sure to gain objective consultation from a manufacturer with the most current handhole expertise.

Jensen Precast is the go-to choice for underground enclosures. We work with leading distributors to supply the best suited products for specific industries, locations, and agency requirements. Our acquisition of Brooks Products in Ontario, California, and Portland, Oregon, enables us to offer you even more choices for your project needs.





DESIGN

- Ensure fast and easy installations with uniform and consistent products designed for industry standards.
- Prevent copper theft with our steel or aluminum LockLid® Secure Utility Enclosure Lids featuring diamond TraxPlate® or smooth surface options ideal for nontraffic rated retrofit jobs.
- Protect your project with our tamper resistant traffic rated security boxes with a proprietary design of 1/2" steel, individual keys, and bolt down options.
- Gain environmental protection with polymer nonconductive enclosures designed as freeze thaw resistant, corrosion proof, incidental traffic rated, and light weight.



BID

- Choose from among dozens of handholes designed specifically for your industry, job, and location.
- Leverage competitive pricing to complete your job within budget, on time, and to your specification needs.
- Purchase with confidence knowing Jensen Precast engineers continually innovate, test, and upgrade our underground enclosures for ease of use, lasting durability, and optimal security.
- Access and download specifications online anytime for your project submittals at [jensenprecast.com](https://www.jensenprecast.com).



BUILD

- Get the right handhole for your project whether small or large, commercial or residential, agency compliant and/or industry specific.
- Complete your job with polymer or concrete, traffic or nontraffic rated, new or retrofit solutions.
- Consult with Jensen Precast industry experts on plans and recommendations for building your projects.



APPLICATIONS

UTILITY

Telecom

- Telephone
- Cable television
- Broadband
- Fiber optics

Electric

- Power line networks
- Subsurface electrical junctions
- Solar field systems

Water

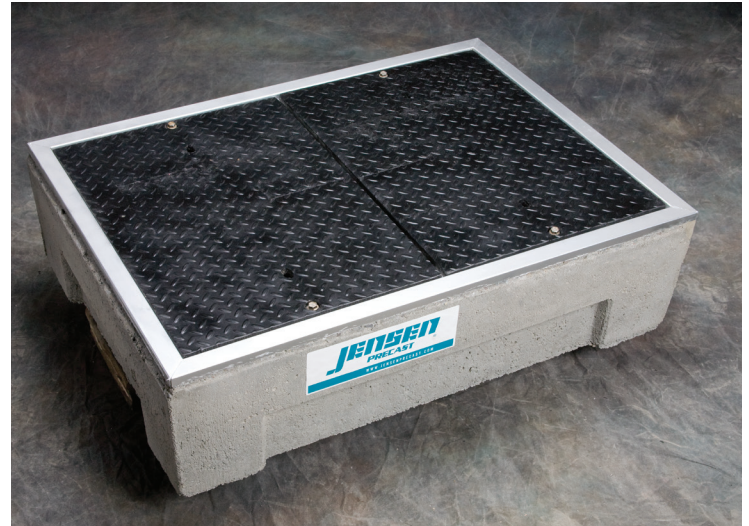
- Sanitary sewers
- Stormwater systems
- Rain harvesting structures

TRANSPORTATION

- Highways
- Roadways
- Parking structures
- Intelligent traffic systems

LANDSCAPE & IRRIGATION

- Lawn and garden sprinkler systems
- Fire suppression systems
- Reclaimed water
- Gray water
- Drainage



SOLUTIONS

- Precast concrete enables ease of installation at jobsites for savings of time and resources in any load requirement.
- Polymer concrete offers resistance to corrosion, lighter product weight, and longlasting durability for Tier 15 to Tier 22 loads that meet ANSI/SCTE-77 and WUC 3.6 requirements.
- Jensen MetalTech TraxPlate® provides superior slip and wear resistance in wet and dry conditions.
- Traffic boxes feature steel frames, and traffic valve boxes come with cast iron frames.



UNDERGROUND ENCLOSURES

Jensen Precast designs and manufactures a wide selection of reinforced concrete and polymer concrete handholes. Contact our specialists to get the exact solution for your project.

NONTRAFFIC RATED CONCRETE HANDHOLES

Precast concrete handholes are the most durable and economical solution for small utility box enclosures. Upgraded features such as the polypropylene cap ring with UV inhibitor, direct bolt down brackets, and lifting holes for quick installation make Jensen Precast handholes the best in the industry for your jobs.

ELECTRIC, GAS & COMMUNICATION HN SERIES

MODEL	SIZE
HN1017	10" x 17"
HN1222	12" x 22"
HN1324	13" x 24"
HN1730	17" x 30"



See section title "Lids & Covers" for a variety of options available for the HN and HW series boxes.



WATER & IRRIGATION HW SERIES

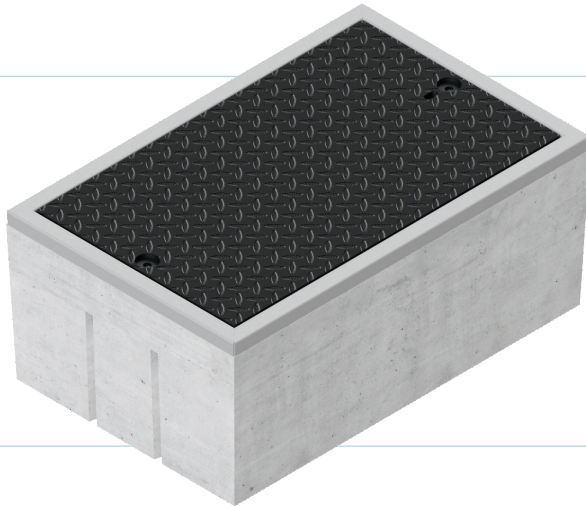
MODEL	SIZE
HW1017	10" x 17"
HW1017X	10" x 17"
HW1222	12" x 22"
HW1324	13" x 24"
HW1730	17" x 30"

TECHNICAL SPECIFICATIONS

- **Material:** Precast concrete body with lifting holes and etched polypropylene face with UV inhibitor anchored in concrete
- **Surface:** Skid resistant cap and lid design
- **Markings:** Standard or custom
- **Wall Type:** Straight
- **Mouseholes:** Available on HW models
- **Performance:** ASTM C857
- **Loading:** Pedestrian/light duty

TRAFFIC RATED CONCRETE HANDHOLES & VALVE BOXES

Many agencies and transportation departments require traffic rated enclosures for installation in roadways or shoulders. Our traffic rated handholes are equipped with steel covers designed and road tested for H-20 traffic and meet ASTM C1802. The HTS model features a tamper resistant design and bolt down mechanism to deter theft. Our traffic rated valve boxes come with cast iron rings and covers.



HT SERIES

MODEL	SIZE
HT1017	10" x 17"
HT1324	13" x 24"
HT1730	17" x 30"
HT2436	24" x 36"
HT3048	30" x 48"

TECHNICAL SPECIFICATIONS

- **Material:** Precast concrete, galvanized steel frame, steel cover (galvanized or painted)
- **Surface:** Diamond plate steel or optional Traxplate™ slip resistant surface
- **Markings:** Standard or custom
- **Wall Type:** Straight
- **Performance:** ASTM C857, AASHTO
- **Loading:** H-20 traffic when installed with concrete collar per manufacturer instructions

HTV SERIES

MODEL	SIZE
HTV10-3	10" x 12"
HTV10-5	10" x 12"



TECHNICAL SPECIFICATIONS

- **Material:** Precast concrete, cast iron frame and cover
- **Surface:** Skid resistant lid
- **Markings:** Standard or custom
- **Wall Type:** Straight
- **Performance:** ASTM C857, AASHTO
- **Loading:** H-20 traffic when installed with concrete collar per manufacturer instructions

POLYMER CONCRETE HANDHOLES

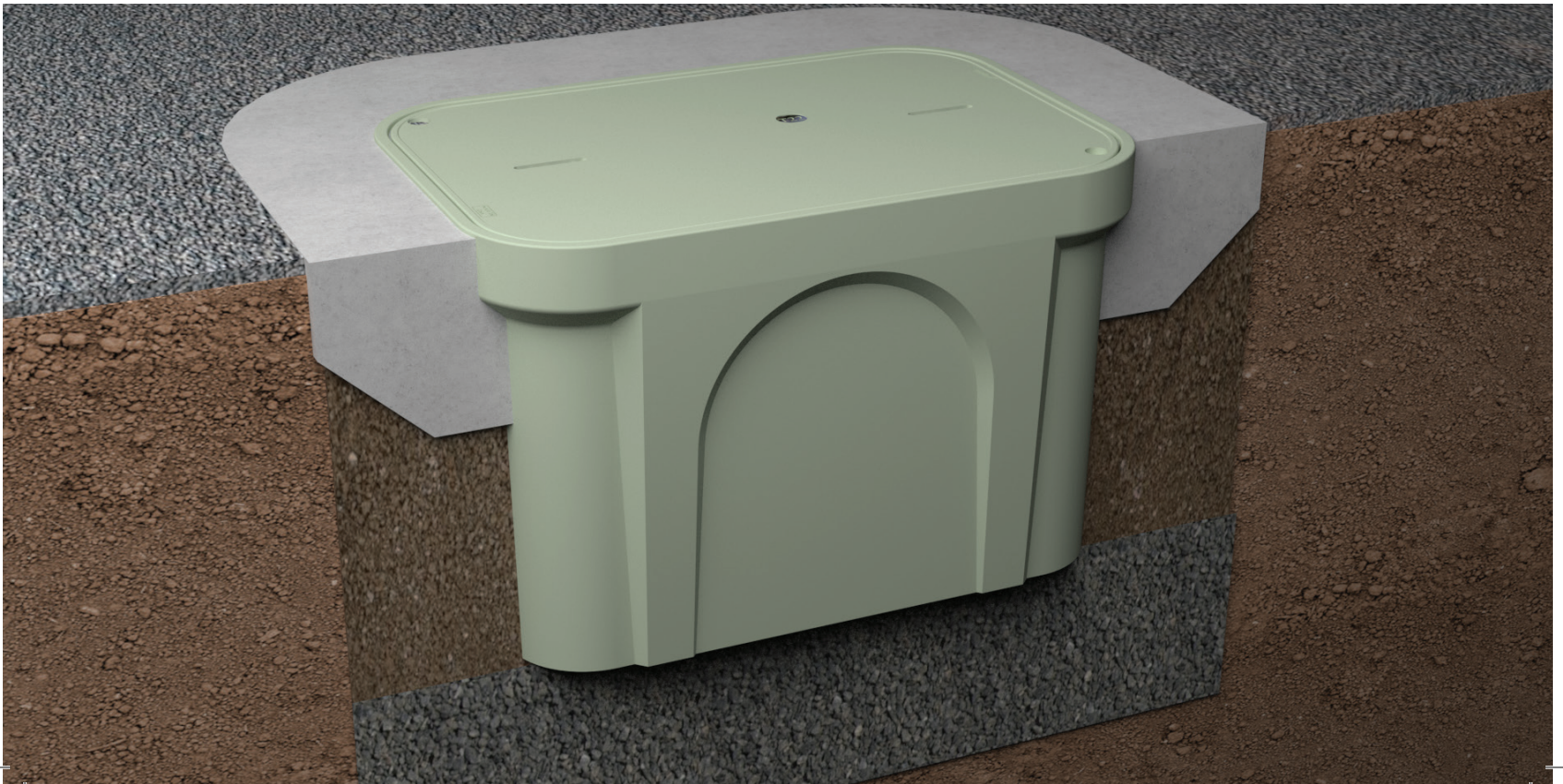
Jensen Precast polymer concrete boxes offer improved strength and durability along with reduced product weight. Our design and manufacturing process creates a glass-like smooth finish. All of our polymer concrete utility boxes are ANSI/SCTE 77 and available in Tier 8, Tier 15 or Tier 22 traffic loading. Straight wall units are stackable and can be used as a box or an extension.

MODEL	SIZE	BODY	DEPTHS
HPC1324	13" x 24"	Straight	12", 18"
HPC1730	17" x 30"	Straight	12", 18", 30"
HPC1730F	17" x 30"	Flared	26"
HPC2436	24" x 36"	Straight	24"
HPC3048	30" x 48"	Straight	36"



TECHNICAL SPECIFICATIONS

- **Material:** Polymer concrete with glass fiber reinforcement
- **Surface:** UV, skid resistant
- **Markings:** Standard or custom
- **Wall Type:** Straight
- **Mouseholes:** Available on HW models
- **Performance:** ANSI/SCTE 77, WUC 3.6
- **Loading:** Tier 8, Tier 15, or Tier 22. Loading dependent on body and lid combination



LIDS & COVERS

Available in polymer concrete, steel, aluminum, and cast iron, Jensen Precast lids and covers for underground enclosures are available in a variety of finish and surface features. Our metallic options include the choice of a TraxPlate® slip resistant surface. We also offer LockLid® Secure Utility Enclosure Lids to deter theft. Our polymer concrete lids and cover deliver extra strength and reduced weight for your jobs.

METALLIC OPTIONS

- **Material:** Steel, aluminum, or cast iron
- **Finish:** Raw, painted, or galvanized
- **Surface:** Diamond plate or TraxPlate®
- **Loading:** Pedestrian, traffic, or H-20 traffic

METALLIC OPTIONS

- **Material:** Steel, aluminum, or cast iron
- **Finish:** Raw, painted, or galvanized
- **Surface:** Diamond plate or TraxPlate®
- **Loading:** Pedestrian, traffic, or H-20 traffic

NON-METALLIC OPTIONS

- **Material:** Polymer concrete
- **Finish:** Bolt down (hex, penta, security key) or non bolt down
- **Surface:** Pedestrian, Tier 8, Tier 15, Tier 22, or incidental traffic

STANDARD MARKINGS & NAMEPLATES

Electric	Telephone
Water	Street lighting
Meter	Traffic signal
Communications	Fiber optic
CATV	Irrigation

Other options available. Custom markings upon request.



Concrete Lid



Polymer Lid



Diamond Plate Cover



Traxplate Cover



Cast Iron Grate



Cast Iron Lid

SECURITY & SAFETY PRODUCTS

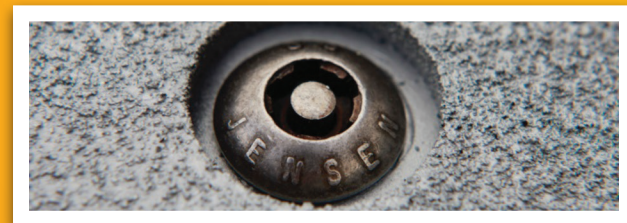
SLIP-RESISTANT SURFACE

TraxPlate® is a patented process for creating a slip resistant surface on steel and aluminum lids for underground enclosures and other pedestrian walkways. Wet or dry, TraxPlate® provides an added measure of safety in situations where slip and fall accidents are of concern.



SECURITY LIDS

LockLid® Secure Utility Enclosure Lids are specifically designed to deter theft from utility handholes and pull boxes. The lift holes close when the lid is locked into place, leaving no access for pry bars.



TRAXPLATE

LockLid
SECURE UTILITY ENCLOSURE LIDS

BROOKS SERIES UNDERGROUND ENCLOSURES

METER BOXES

Jensen Precast Brooks meter boxes assure consistent quality and interchangeability of all parts. Several styles of reinforced concrete covers with concrete or cast iron reading lids are available for your projects. All concrete covers and lids are reinforced with a welded metal loop or grid.

MODEL	SIZE
#03	9 1/2" x 16"
#11	16" x 21"
#33	10" x 20"
#36	10 1/2" x 17 1/4"
#37	12" x 20"
#38	13" x 24"
#65	17" x 28"
#66	17" x 30"

All boxes are 12" deep.



VALVE BOXES

Our Brooks line of precast concrete valve boxes includes both armored and nonarmored bodies. Boxes for other than traffic use are nonarmored and have concrete lids. Depth extension are available in stacking lengths of 6" and 12" for all valve boxes.

CURB VALVE BOXES

MODEL	SIZE
1-RD	7 3/4" dia x 12"
1-SP	8" dia x 10"
30-30	8" dia x 30"
9	9" dia x 24"



TRAFFIC VALVE BOXES

MODEL	SIZE
1-RT	8 3/4" dia x 12"
3-RT	10" dia x 12"
4-TT	10" dia x 12"

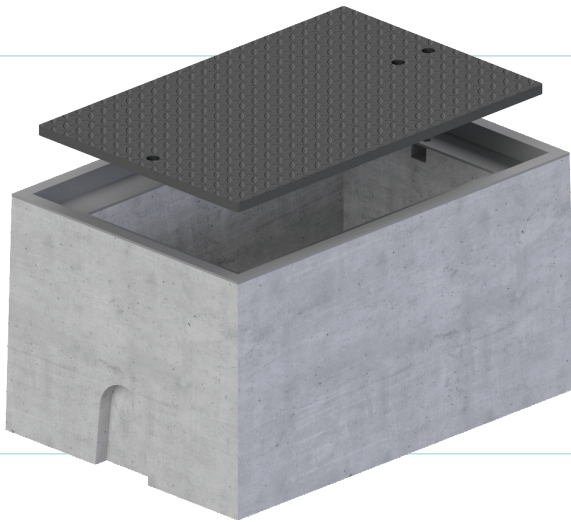


PULL BOXES

Brooks precast concrete pull boxes are designed for use as junction boxes in underground electrical circuits or as enclosures for transformers. All bodies are reinforced with welded wire frames. Covers have welded grid reinforcing and are equipped with lifting eyes.

PULL BOXES

MODEL	SIZE
#1	9 1/2" x 16" x 12"
#2	12" x 22" x 12"
#3	17" x 30" x 12"
#36	10 1/2" x 17 1/4" x 12"
#38	13" x 24" x 12"
#66	17" x 30" x 12"
#67	24" x 36" x 14"
#68	30" x 48" x 14"



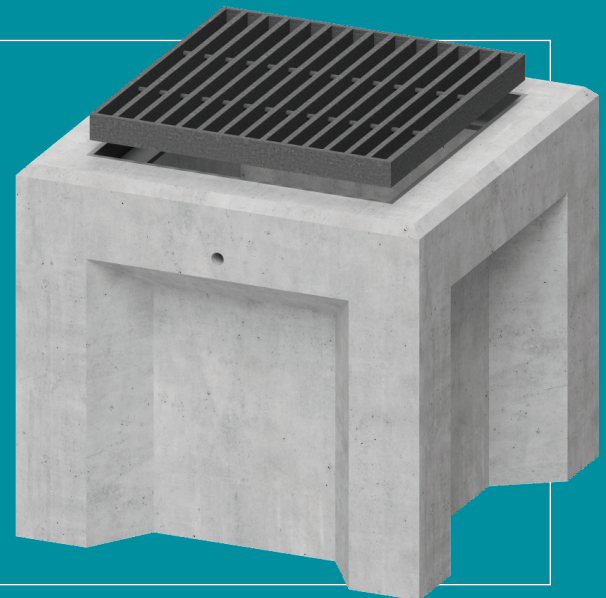
TRAFFIC PULL BOXES

MODEL	SIZE
#3 1/2-T	10 1/2" x 17 1/4" x 12"
#5-T	13" x 24" x 12"
#6-T	17" x 30" x 12"

RELATED PRODUCTS: CATCH BASINS

Brooks series catch basins are manufactured in five sizes with grates and covers available for parkway and traffic applications. Galvanized frames, grates and covers are available for all series with grates, meeting ADA and heel proof specifications when required.

MODEL	SIZE	MODEL	SIZE
1212CB	12" x 12"	2424CB	24" x 24"
1218CB	12" x 18"	3636CB	36" x 36"
1818CB	18" x 18"		



Jensen Precast designs, engineers, and manufactures precast concrete products for the growing infrastructure needs of communities, businesses, and government agencies.



LOCATIONS & CONTACT

CORPORATE OFFICE

Reno, Nevada
(775) 352-2700

ARIZONA

Phoenix (602) 268-0228
Tucson (520) 748-1607

CALIFORNIA

Fontana (909) 350-4111
Kingsburg (559) 248-0270
Lakeside (619) 219-8430
Lockeford (209) 727-5573
Martinez (925) 222-3471
Ontario (909) 983-9789
Orland (530) 865-4277
Sacramento (916) 991-8800
Santa Rosa (916) 991-8800

HAWAII

Kapolei (808) 528-1175

NEVADA

Las Vegas (702) 649-0045
Sparks (775) 359-6200

WASHINGTON

Camas (360) 834-3459
Puyallup (253) 929-1818
Shelton (253) 884-4008

Jensen Precast is ready to assist you with job quotes, designs, and products. Contact your nearest branch location or reach us at (775) 352-2700 or info@jensenprecast.com



For more information, go to jensenprecast.com