

### JENSEN PRECAST DELIVERS DESIGN-BUILD SOLUTION TO RELOCATE TELECOM JUNCTIONS FOR CALIFORNIA HIGH-SPEED RAIL

Construction Package 1 of the California High-Speed Rail covers 32 miles from Avenue 19 in Madera County to East American Avenue in Fresno County. It includes 12 grade separations, 2 viaducts, 1 tunnel, and 1 river crossing. It also encounters extensive underground utility infrastructure. The California High-Speed Rail Authority had to relocate 6 main telecommunication junctions to make way for the bullet train.

Jensen Precast engineered a design-build solution of 142 precast concrete electric utility structures of various sizes, including the largest products at 12'W x 15'H x 12'W, with capacity for current and future telecom needs.



#### PROJECT OWNER

California High-Speed Rail Authority

#### ARCHITECT/ENGINEER

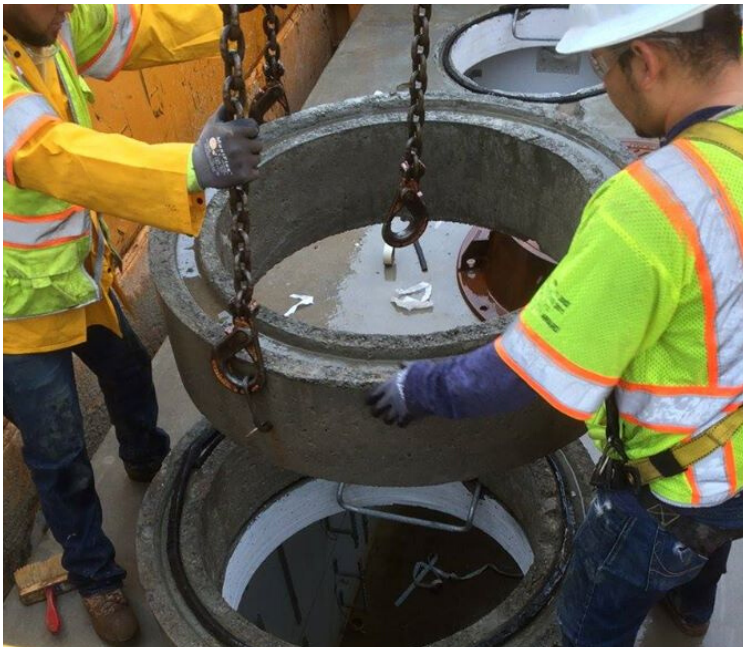
Parsons Transportation Group

#### CONTRACTOR

Valverde Construction

#### PRODUCTS

Precast Concrete Electric Utility Structures up to 12'W x 12'L x 15'H  
Precast Concrete Panel Vaults and Manholes



## CHALLENGES

Before building Construction Package 1 of the California High-Speed Rail, various existing structures needed to be relocated to accommodate the rail pathway. Underground utility infrastructure was a primary concern. The California High-Speed Rail Authority had to move 6 main telecom junctions in the rail pathway to continue supporting services to customers in the Fresno, California, area.

## SOLUTIONS

"Jensen Precast was commissioned to engineer a total design-build solution of precast concrete utility structures to accommodate the new telecom junctures," says Robert Pool, Jensen Precast Fresno Site Manager. "Along with manufacturing new junctions, we were asked to increase the size of the infrastructure to allow for future telecom needs. We ended up delivering 142 precast concrete vaults of varying sizes, including 12'W x 15'H x 12'W structures, and significantly upsized the capacity to house more telecom equipment and cable than available in the previous location."

## RESULTS

- Allows the California High-Speed Rail Authority to complete Construction Package 1 on a pathway suitable for the new rail system.
- Enables continued telecom services for Fresno, California, residents.
- Provides additional capacity for future telecom needs at the new underground facility.

## Related Resources

> [hsr.ca.gov](http://hsr.ca.gov)  
 > [valverde.webflow.io](http://valverde.webflow.io)  
 > [tutroperini.com](http://tutroperini.com)  
 > [parsons.com](http://parsons.com)

