

MANHOLE PROTECTIVE SYSTEMS

America's aging sewers need \$1 trillion in repairs¹. Lower your city's costs by making your manhole systems last decades longer with thermoplastic liners.

WHY SEWERS FAIL CITIES

Municipalities across the United States face rising costs to repair crumbling sanitary sewer systems.

Exfiltration

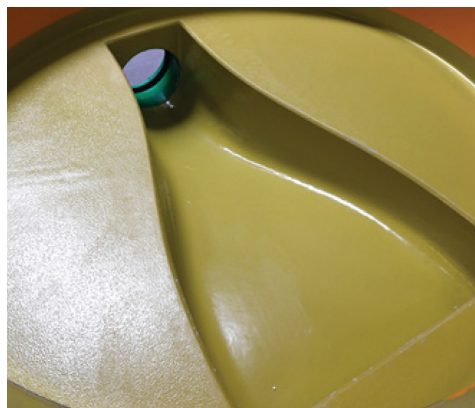
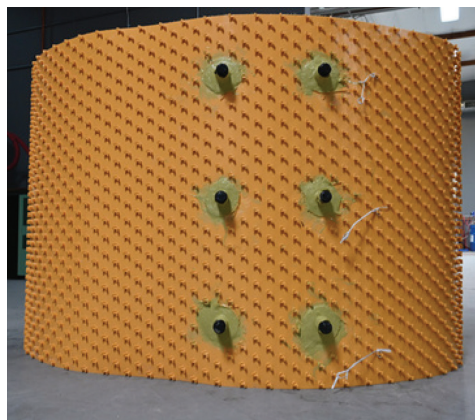
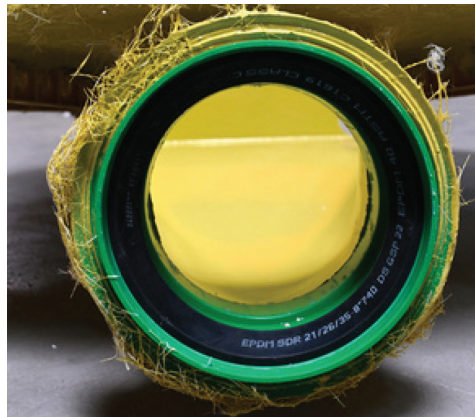
When sewage leaks from corroded manholes and pipes, exfiltration contaminates soils and pollutes ground waters, aquifers, and receiving waters.

Inflow & Infiltration

When storm or ground waters leak into sewer systems, inflow and infiltration can lead to unnecessary loads on treatment plants.

Microbial-Induced Corrosion

Concrete can corrode from sulfuric acid caused by bacteria. This type of corrosion can deteriorate structures due to microbial induction.



HOW TO SOLVE IT

Protect your sanitary sewer systems for decades longer with advanced liner products from Jensen Precast.

Fiberglass Reinforced Plastic

FRP is ideal for sewers exposed to acidic wastewater.

High Density Polyethylene

HDPE is resistant to corrosion from chemicals in sewage.

Polypropylene

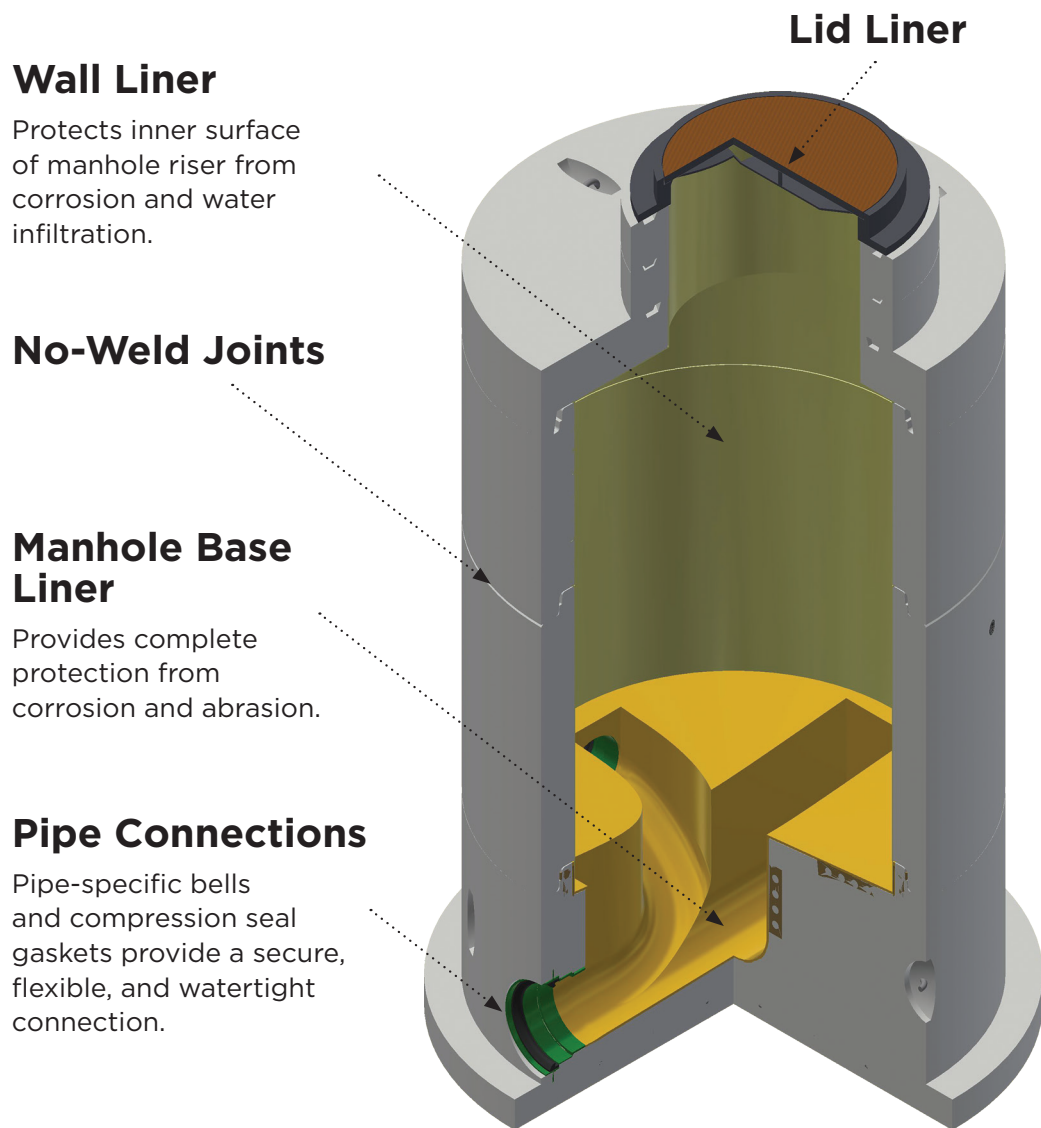
PP does not corrode, rust, or degrade in moisture.

ASTM C478 Compliant

¹Buried No Longer: Confronting America's Infrastructure Challenge, American Water Works Association, November 2021

JENSEN PRECAST LINED ROUND MANHOLE

When embedded in concrete, Jensen Precast watertight protective linings provide the strongest available resistance to exfiltration, inflow and infiltration, and microbial-induced corrosion for your manholes systems - top to bottom.



Request a quote for your project by calling (775) 440-2005
or visiting jensenprecast.com/quote

