

Agricultural Products

For dairy producers, cattle
farmers, and other individuals in
the agriculture industry



Jensen Infrastructure designs high quality durable products specific to the agriculture industry. Easy to install, easy to maintain, our solutions are engineered to fit the needs of today's agriculturist.



Agricultural Products

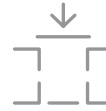
The domestication of animals began around 10,000 BC in Mesopotamia. Throughout the millennia agriculture advanced toward a more efficient and more productive business model to meet the needs of growing human populations. Today there are a variety of approaches to excelling at agriculture across the globe. It involves having the right tools and equipment to keep your business on track.

For dairy producers, cattle farmers, and other individuals in the agriculture industry, the proper care for livestock is crucial to success. It requires a strong understanding of contemporary livestock needs and setting up the ideal environment to cater to those needs. It means providing ample watering areas to allow animals to comfortably drink, accessible grazing bins to encourage adequate feeding time, and long-term feed storage structures to prevent spoilage and waste.



When choosing the right products for a dairy or cattle business, consider a few key areas:

- ✓ **How many cattle will need to be watered?** Prevent overcrowding at the water source and ensure well-hydrated livestock with appropriately sized and shaped water troughs.
- ✓ **Is feed waste a concern?** Select bunkers and storage solutions with cleverly built in features to reduce spillage during meals and spoilage over time.
- ✓ **Are you a wholesale distributor who needs multiple products in stock?** Select a manufacturer with business-to-business experience to ensure a seamless and headache-free transaction every time.
- ✓ **Will you install the equipment yourself or require assistance?** Buy from a company that makes installation easy with convenient features such as lifting inserts and drop in place delivery.
- ✓ **Do you want sturdy bunker silo panels for long-term storage but with the flexibility to fit the changing needs of the operation?** Look for adaptable panels that allow for added length, replacement of damaged areas, and reconfiguration of the entire silo.



Design

- Tap expert advice from the Jensen Infrastructure team to meet any sizing, capacity, and performance requirement for your business.
- Specify products approved by major agencies such as the USDA Natural Resources Conservation Service, Bureau of Land Management, and other regulatory bodies.
- Request custom solutions with optional product features, including integrated end caps on feed bunks, float valves in water troughs, and caution striping on bunker panels.

Manufacture

- Build your wholesale or distributor credibility with an inventory of high performing products easy to acquire, quick to set up, and designed to save costs.
- Ensure rugged durability against extreme weather, silage acids, and other conditions with superior products manufactured in a National Precast Concrete Association certified plant.
- Protect livestock and wildlife, prevent feed spoilage, and safeguard against other cattle and dairy industry challenges with products designed with practicality, safety, and creativity in mind.

Set in Place

- Secure safe and timely delivery of products directly from our manufacturing facilities in Arizona, California, Hawaii, Nevada, Oregon, and Washington.
- Take advantage of Jensen's optimal standards and optional installation services for agricultural products.
- Allow for future product reconfiguration opportunities with adaptability to fit the growing and changing needs of the operation.



Applications



Cattle & Dairy

- Livestock feeding
- Livestock watering
- Large scale feed storage
- Manure storage
- Materials storage
- Cattle safeguards
- Fence posts
- Wildlife safeguards
- Environmental conservation



Wholesale Distribution

- Business to business support
- Preferred product delivery
- Expert consultation
- Drawings and specifications

Solutions



Ensure healthy cattle with feed bunks built to reduce waste, efficiently deliver feed to the bunk, and utilize space effectively. Install precast bunker silos to reduce spoilage, conserve space, and provide a long lasting silage storage solution using our precast concrete designs.



Satisfy concerns for livestock safety and wildlife conservation with water troughs that include escape ramps and chamfered edges.



Configure bunker silo panels for site-specific preferences, changing business environments along with benefits of spoilage reduction, space conservation, and provide a long lasting silage storage solution using our precast concrete designs.



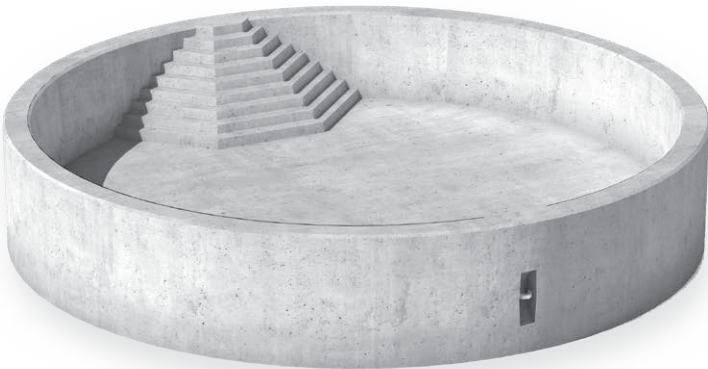
Install prestressed concrete fence posts to keep livestock safe and secure inside designated areas.

Water Troughs

With two options for water troughs, Jensen Infrastructure can supply you with the right fit for your operation. Each type comes with threaded couplers for inlet, overflow, and drain. Wildlife escape ramps can be included with the rectangular design if required.

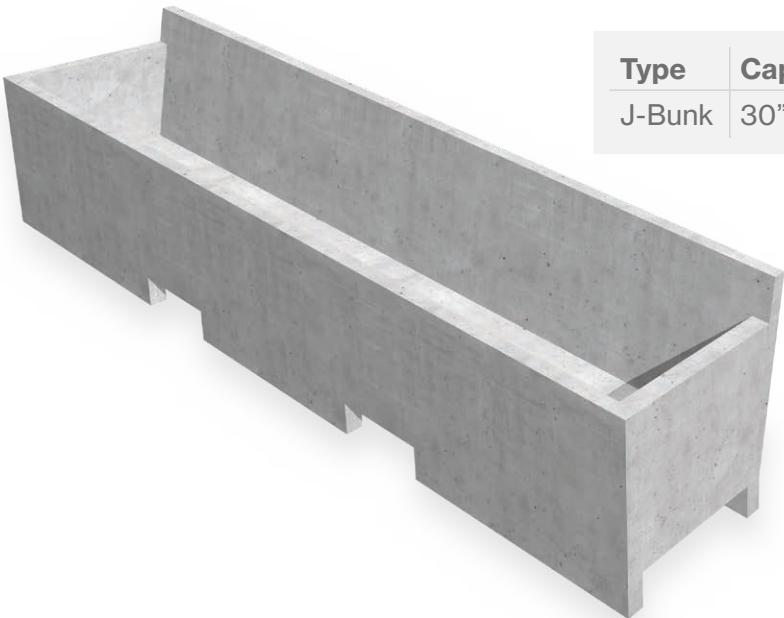


Type	Capacity	Standard Dimensions
4' x 10' Rectangular	350 gal	3" to 4" tapered walls, 4" base, 26" tall
10' Round	1,100 gal	5" to 6" tapered walls, 6" base, 24" tall



Feed Bunks

Jensen Infrastructure offers a J-bunk style feed bunk. Our J-bunk has a high back to keep feed from being pushed over the top, reduce waste. We can install weld plates, inserts, or other mechanisms for stanchion post mounting. Multiple bunks can be linked via chains. Other benefits include chamfered edges to prevent livestock damage, reinforced steel cage construction, optional end caps for both sides, and delivery to your location.



Type	Capacity	Feed Depth
J-Bunk	30" tall, 36" wide, 12' long	13"

Silage Storage

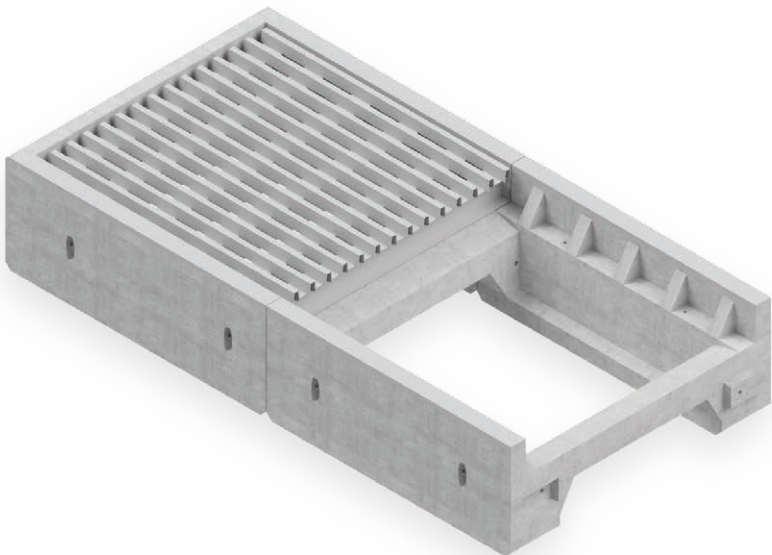
For material storage and agriculture containment purposes, Jensen Infrastructure manufactures L&T precast concrete panels that are easy to install and reconfigure, securely stay in place with tongue and groove design, and available with additional bolted connections. Standard heights include 8.5' and 10'. We also offers a hollow-core, A-Wall style storage panel with bolting pockets to secure panels to a pre-existing slab. This design removes the protruding toe of the L&T panel, and allows for seamless joints between slab and panel.

Height	Base Width	Length
8.5'	L - 4' T - 5'	5' - 10'
10'	5'10"	6'6"
8' A-Frame	4'	4'



Cattle Guards

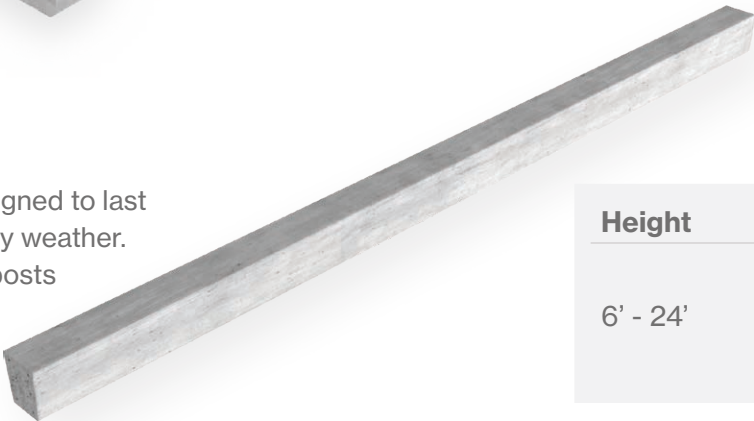
Jensen Infrastructure manufactures durable and long lasting cattle guards to prevent cattle from crossing into areas with vehicular traffic. With every purchase we offer delivery and set up service. Our quick installation keeps overall costs low. The modular designs of our cattle guards meet Bureau of Land Management specifications and come in lengths of 12', 14', and 16'.



Height	Width	Length
ADOT 36"	8'	8'

Fence Posts

Our Harvest Pillar fence posts are designed to last longer than wood and steel posts in any weather. Made of prestressed concrete, these posts offer the right flexibility to keep your livestock safe.



Height	Width
6' - 24'	3" x 3"
	4" x 4"
	4" x 5"

Take the next step.

Talk to a Jensen agriculture structures expert to find the best solution for your project.

Contact Us

Connect with our team to discuss your project needs and get expert guidance.

Request a Lunch & Learn

Schedule an educational session for your team on detention, treatment, and biofiltration solutions.

Contact Information



Phone: (775) 352-2700

Email: info@jenseninfrastructure.com

Web: jenseninfrastructure.com

About Jensen Infrastructure

Jensen Infrastructure is a second-generation, family-run business that's been helping build America's infrastructure since 1968. We bring deep engineering expertise, multi-material capabilities, and personal support to every project – so you get the right solution delivered by a team that stands behind it.

Infrastructure
JENSEN