

# Sewer & Storm Drain Manholes

One of the most robust product lines of sewer and storm drain manholes available.



Jensen Infrastructure offers one of the most robust product lines of sewer and storm drain manholes in the industry. Our high quality precast concrete manholes are configured for uniform alignment with projects of all sizes and expectations.



# Sewer & Storm Drain Manholes

Much like an underground subway system, proper navigation of sewer and storm drain systems depends on effectively designed and developed distribution points along the waterway. Well thought out manholes account for everything from pipe types and configurations to elevations and inverts for a seamless journey from start to finish.

For project owners, engineers, and contractors, precast concrete provides the best solution for sewer and storm drain manholes. Installation is efficient, safe, and dependable.

When selecting products, you will want to address the all important issues of maintenance and longevity. Here are a few considerations.



**How much protection against corrosion do you need?** Will the products you select stand up to the elements over time? Choose the highest quality structures for optimal outcomes.



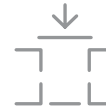
**What do you need to combat everlasting inflow and infiltration challenges?** How is the concrete made? Get the products that give you and your clients peace of mind for the long run.



**Does your project call for addressing complex or simple setups?** Will all the pieces align and seal effectively? Work with a manufacturer who provides the right configurations for your jobs.

Jensen engineers, designs, and manufactures precast concrete manholes for sewer and storm drain installations that stand the test of time. No matter the complexity or simplicity, our goal is to make your job easier.





## Design

- Design every job with the highest quality precast concrete for sewer and storm drain manholes.
- Match every manhole to your projects precisely, including custom inclination openings for pipe penetrations, cast in connections, and channel wall and bench angles.
- Ensure your manhole components meet ASTM C478 Standard Specification for Circular Precast Reinforced Concrete Manhole Sections and your pipe connections meet ASTM C923 Standard Specification for Resilient Connectors Between Reinforced Concrete Manhole Structures, Pipes, and Laterals.

## Manufacture

- Secure accurate structure drawings for every manhole, including designs with built in holes for inverts and monolithic channels.
- Avoid costly changes during installation with detailed review of elevations and sizes.
- Minimize project lead time with our robust manufacturing capacity and streamlined production process.

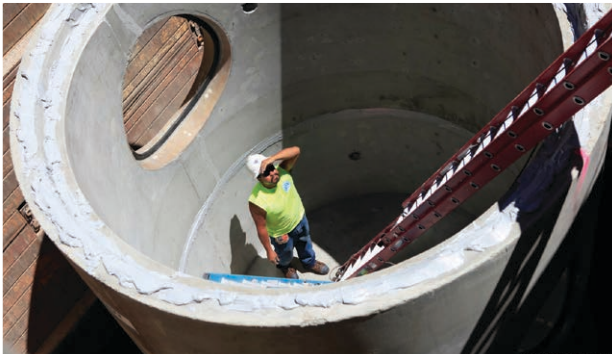
## Set in Place

- Fast track projects with challenging angles and elevation drops.
- Install with confidence using precision controlled precast concrete.
- Eliminate cast in place cure time to expedite backfill for faster job completions.





# Applications



## ✓ **Water Management**

- Sanity sewers
- Stormwater drains
- Infiltration galleries
- Deflection systems
- Distribution points

## ✓ **Access Management**

- Inspection chambers
- Maintenance pathways
- Observation points
- Pipe upgrades
- Water quality monitors

# Solutions

✓ High quality precast concrete speeds up projects and saves costs through consistent and dependable precision.

✓ Watertight joints reduce damaging microbial induced corrosion, exfiltration, and inflow and infiltration issues.

✓ Single pour monolithic manholes accelerate manufacturing, customization, and delivery.

✓ Custom fittings enable faster completion of complex projects challenged with delays.

✓ Optional polymer steps enable easy access to underground infrastructure areas.

✓ Onsite expert project support provides more streamlined successful completions.

# Storm Drain Manholes

Jensen offers a choice line of storm drain manholes in stock, ready for installation, and approved by municipal and state agencies. Get standard or custom fittings for your projects.

# Sewer Manholes

Our sewer manholes come in a variety of sizes and shapes to align easily with projects large and small.  
Durable precast concrete ensures fast installation and a lasting solution.

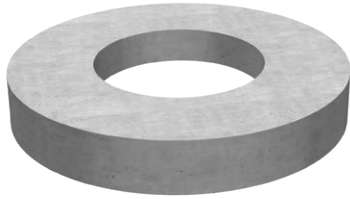
# Corrosion Protection

The water efficiency of modern plumbing systems have had unintended consequences on the life cycle of our sewers. Low flows and concentrated effluent characterize today's sanitary infrastructure.  
These traits, combined with extreme heat conditions and high levels of H2S gas, are causing damaging corrosion. Jensen offers a modern liner system as a cost efficient solution that prevents corrosion, avoids delamination, and employs gaskets to eliminate field welding.

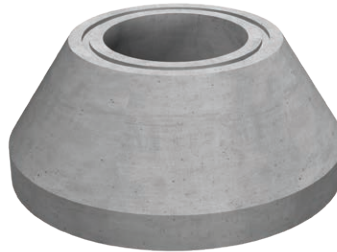


| Inside Diameter | Outside Diameter | Wall Thickness |
|-----------------|------------------|----------------|
| 36"             | 44"              | 4"             |
| 48"             | 58"              | 5"             |
| 60"             | 72"              | 6"             |
| 72"             | 86"              | 7"             |
| 84"             | 100"             | 8"             |
| 96"             | 114"             | 9"             |
| 120"            | 142"             | 11"            |
| 144"            | 168"             | 12"            |
| 192"            | 208"             | 8"             |

## Manhole Components



Flat Tops



Concentric Cones



Eccentric Cones



Barrels



Bases

## Pipe Connections



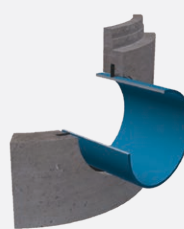
Boot



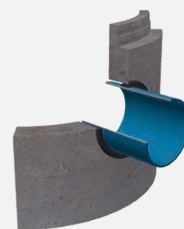
PVC  
Sleeve



Grout



Cast-In  
Gasket



Compression  
Gasket



Modular  
Sleeve

## Monolithically Cast Manhole Bases

Attack inflow and infiltration with watertight connections using a monolithic manhole base structure. Monolithically cast manholes are a cost effective infrastructure tool. Smooth yet complex radius channels and pipe connections are integrally cast for hydraulic flow efficiency, low turbulence, and superior watertightness.



# Take the next step.

Talk to a Jensen manhole expert to find the best solution for your project.

## Contact Us

Connect with our team to discuss your project needs and get expert guidance.

## Request a Lunch & Learn

Schedule an educational session for your team on detention, treatment, and biofiltration solutions.

## Contact Information



Phone: (775) 352-2700

Email: [info@jenseninfrastructure.com](mailto:info@jenseninfrastructure.com)

Web: [jenseninfrastructure.com](http://jenseninfrastructure.com)

### About Jensen Infrastructure

Jensen Infrastructure is a second-generation, family-run business that's been helping build America's infrastructure since 1968. We bring deep engineering expertise, multi-material capabilities, and personal support to every project – so you get the right solution delivered by a team that stands behind it.

Infrastructure  
**JENSEN**