

StormVault™

Smarter stormwater
detention.

Spend less. Speed up installs. Scale to any site.



Is Stormwater Detention Delaying Your Project?

Stormwater detention is one of the biggest friction points in construction. Engineers deal with rigid systems, slow submittals, and design compromises. Contractors face complex installs, long lead times, and rising labor costs.

The result? Delays, risk, and frustration.

StormVault™ removes the delays.

StormVault helps you meet spec, install faster, and avoid costly delays — all with a system that's engineered to simplify stormwater detention.



Faster to Install

Familiar box culvert design means teams already know how to set it.



Shorter Lead Times

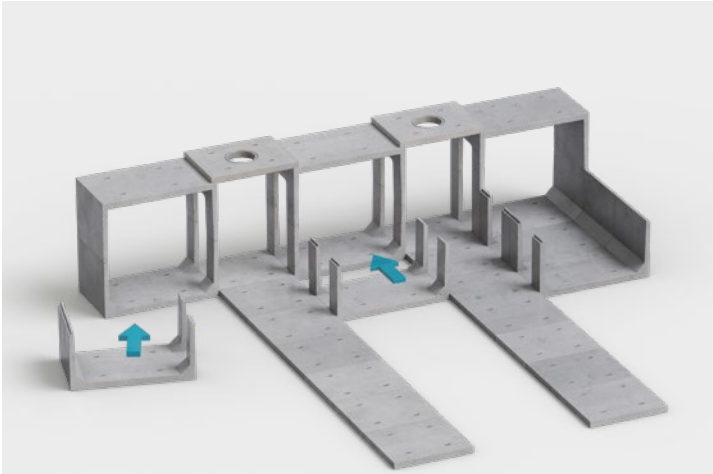
In-house design, multi-plant production, and delivery capabilities get systems to your site faster.



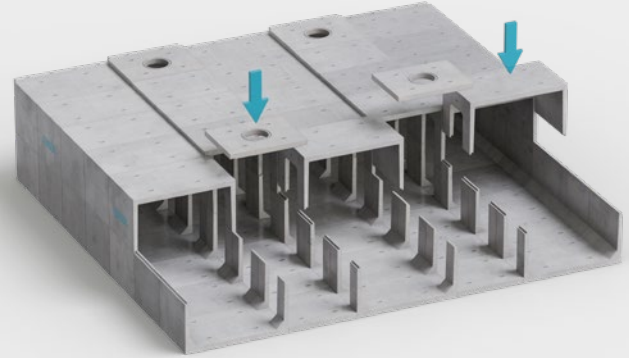
Site-Specific Designs

Each system is engineered to your exact geometry, volume, and compliance needs.

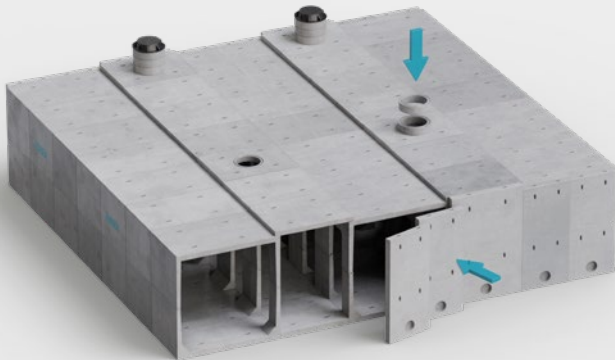
How It Works.



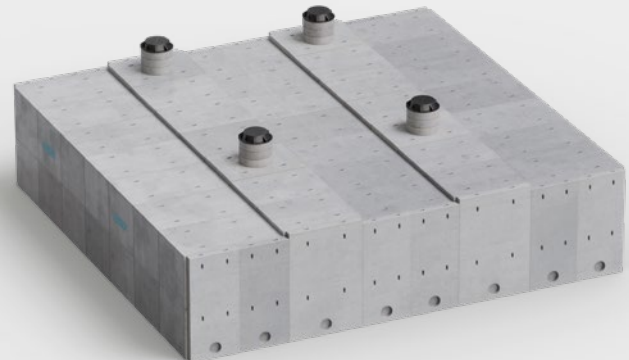
- 1 Modular design makes it easy to connect culvert, bridge slabs, and base slabs.



- 2 Build your stormwater detention structure faster with interior and exterior modules.



- 3 Add outlet pipe openings with end walls to ready the structure for complete setup.



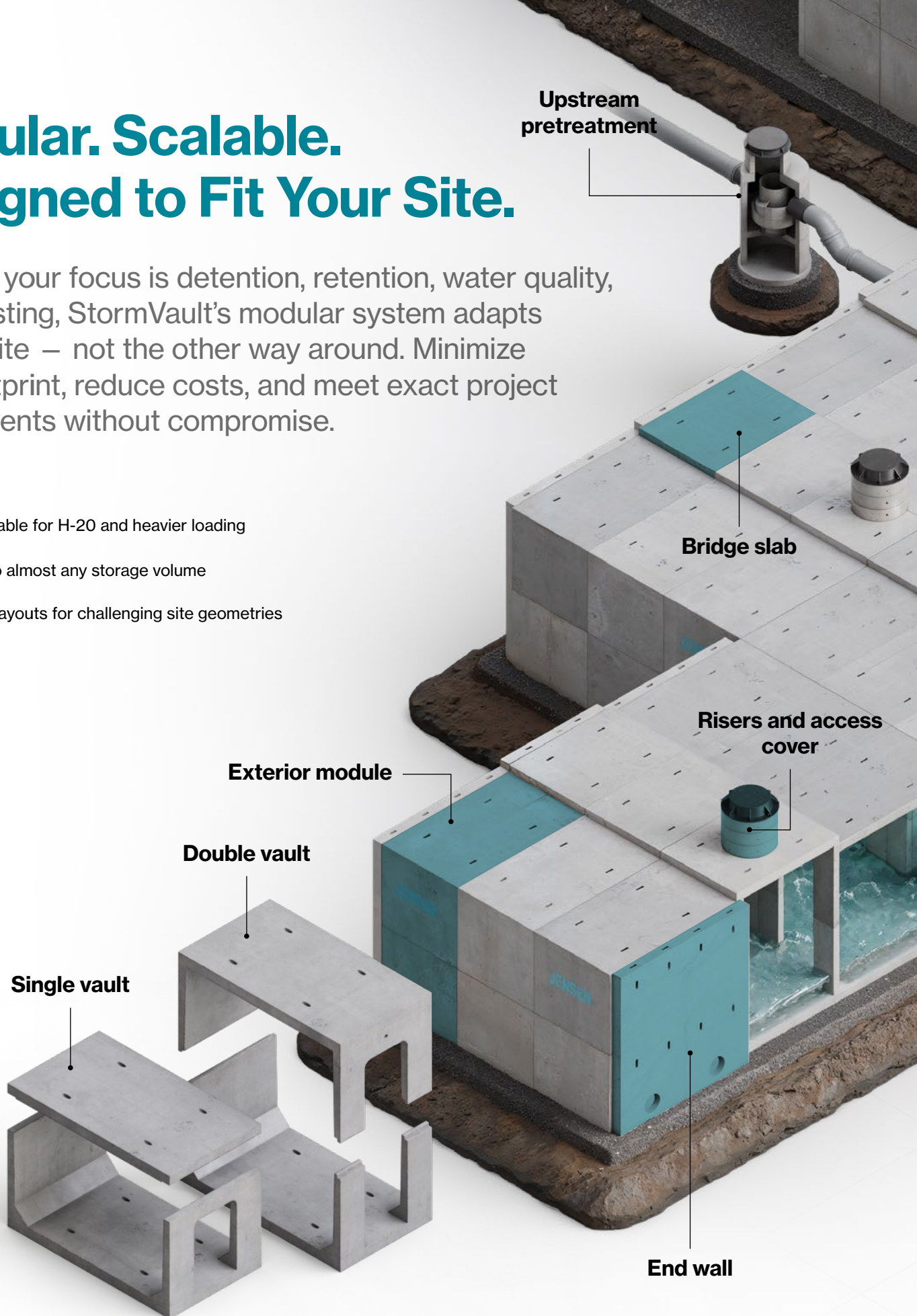
- 4 Complete your project with grade rings at top to serve as access openings.

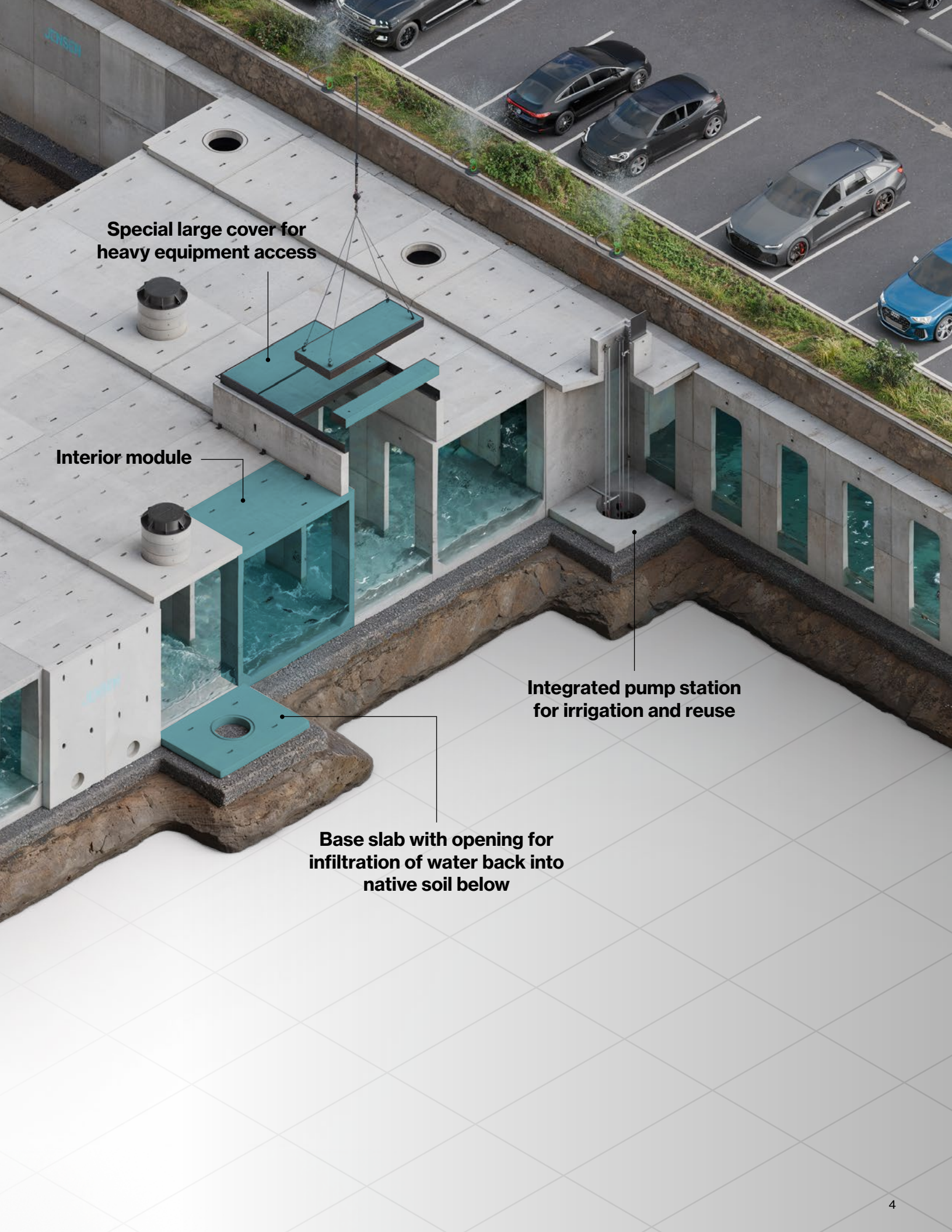
Most teams already know how to install box culvert – StormVault builds on that knowledge to save you time and money.

Modular. Scalable. Designed to Fit Your Site.

Whether your focus is detention, retention, water quality, or harvesting, StormVault's modular system adapts to your site – not the other way around. Minimize your footprint, reduce costs, and meet exact project requirements without compromise.

- 1 Configurable for H-20 and heavier loading
- 2 Scales to almost any storage volume
- 3 Flexible layouts for challenging site geometries





Special large cover for heavy equipment access

Interior module

Integrated pump station for irrigation and reuse

Base slab with opening for infiltration of water back into native soil below

Proven Performance. Trusted by Teams that Build.

StormVault is built on 25+ years of field-tested expertise — trusted by engineers and contractors to simplify detention and keep projects moving.

Culver City Treat & Reuse

Two hydrodynamic separators, a retention structure, and a pump station enabled Culver City, California, to reuse stormwater for park irrigation.



Santa Ana Capture & Release

A StormVault detention system stymies flooding at the Cowan Ranch subdivision in Santa Ana, California.



Engineer-Backed Support

Stamped drawings, full submittal packages, and install guidance – from design to final inspection, our team is with you every step of the way.

Maintenance Made Simple

StormVault's open-box design allows clear access for inspection and cleaning, even with small skid steers or standard equipment.

Danville Integrated Pump & Detention

When Borel Townhomes needed a small footprint stormwater solution in Danville, California, a detention system was installed with an integrated pump station.

Also available from Jensen

- Stormwater treatment systems
- Biofiltration solutions
- Complete stormwater management support
- Pump stations



Take the next step.

Talk to a Jensen stormwater expert to find the best solution for your project.

Contact Us

Connect with our team to discuss your project needs and get expert guidance.

Request a Lunch & Learn

Schedule an educational session for your team on detention, treatment, and biofiltration solutions.

Contact Information



Phone: (775) 352-2700

Email: info@jenseninfrastructure.com

Web: jenseninfrastructure.com

About Jensen Infrastructure

Jensen Infrastructure is a second-generation, family-run business that's been helping build America's infrastructure since 1968. We bring deep engineering expertise, multi-material capabilities, and personal support to every project – so you get the right solution delivered by a team that stands behind it.

Infrastructure
JENSEN